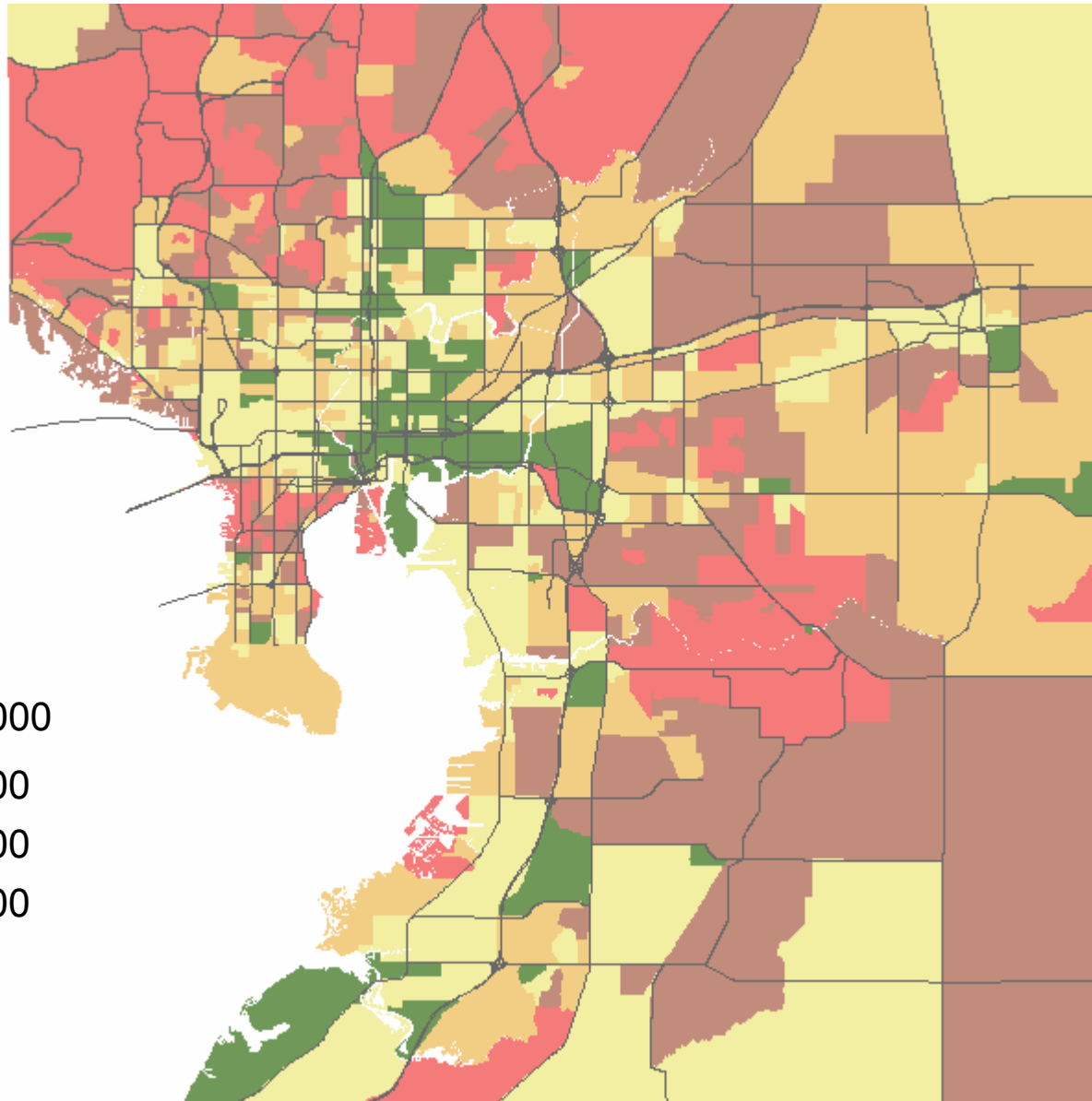


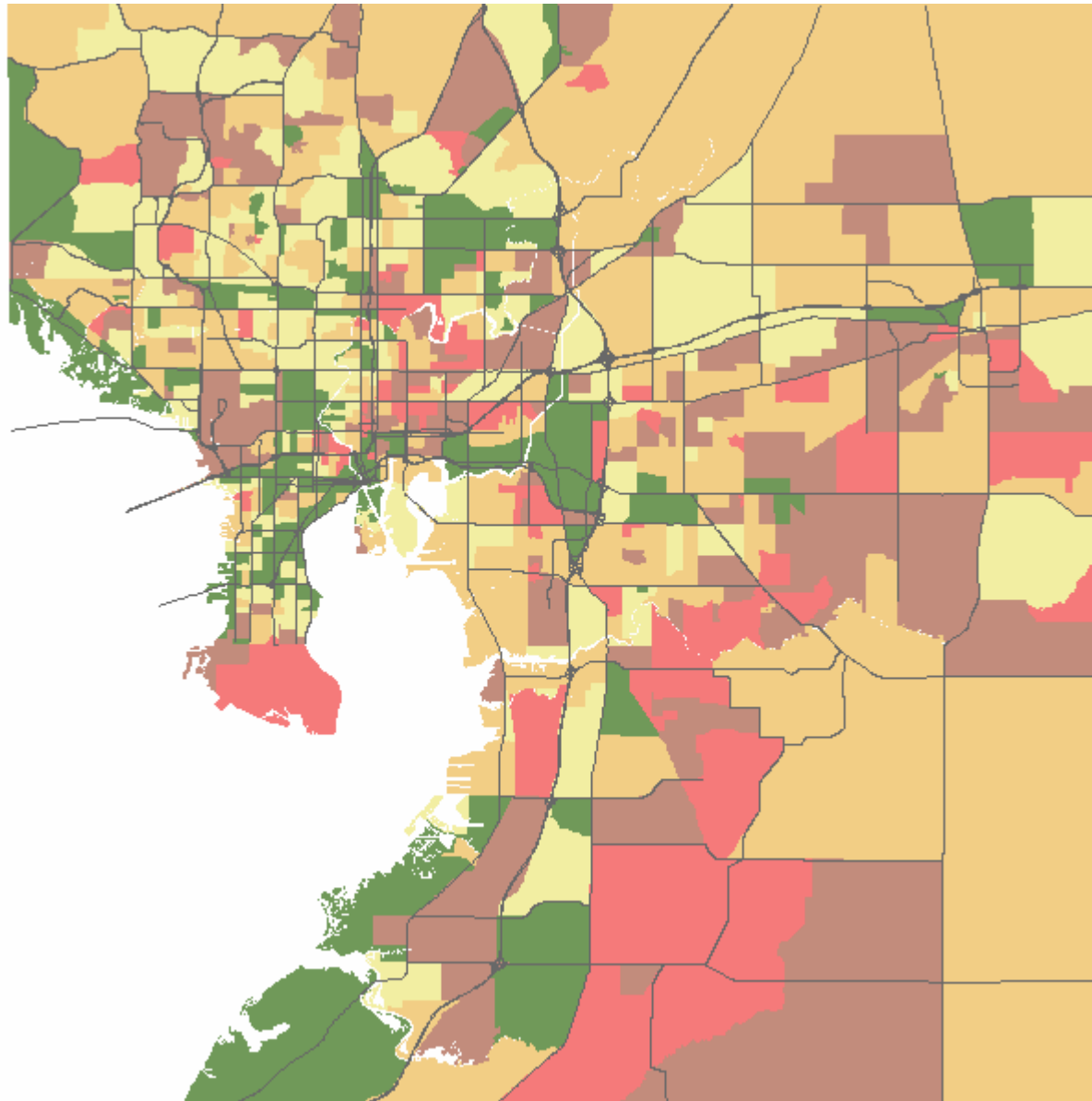
Transit Propensity

Existing and Forecast Housing
Existing and Forecast Employment

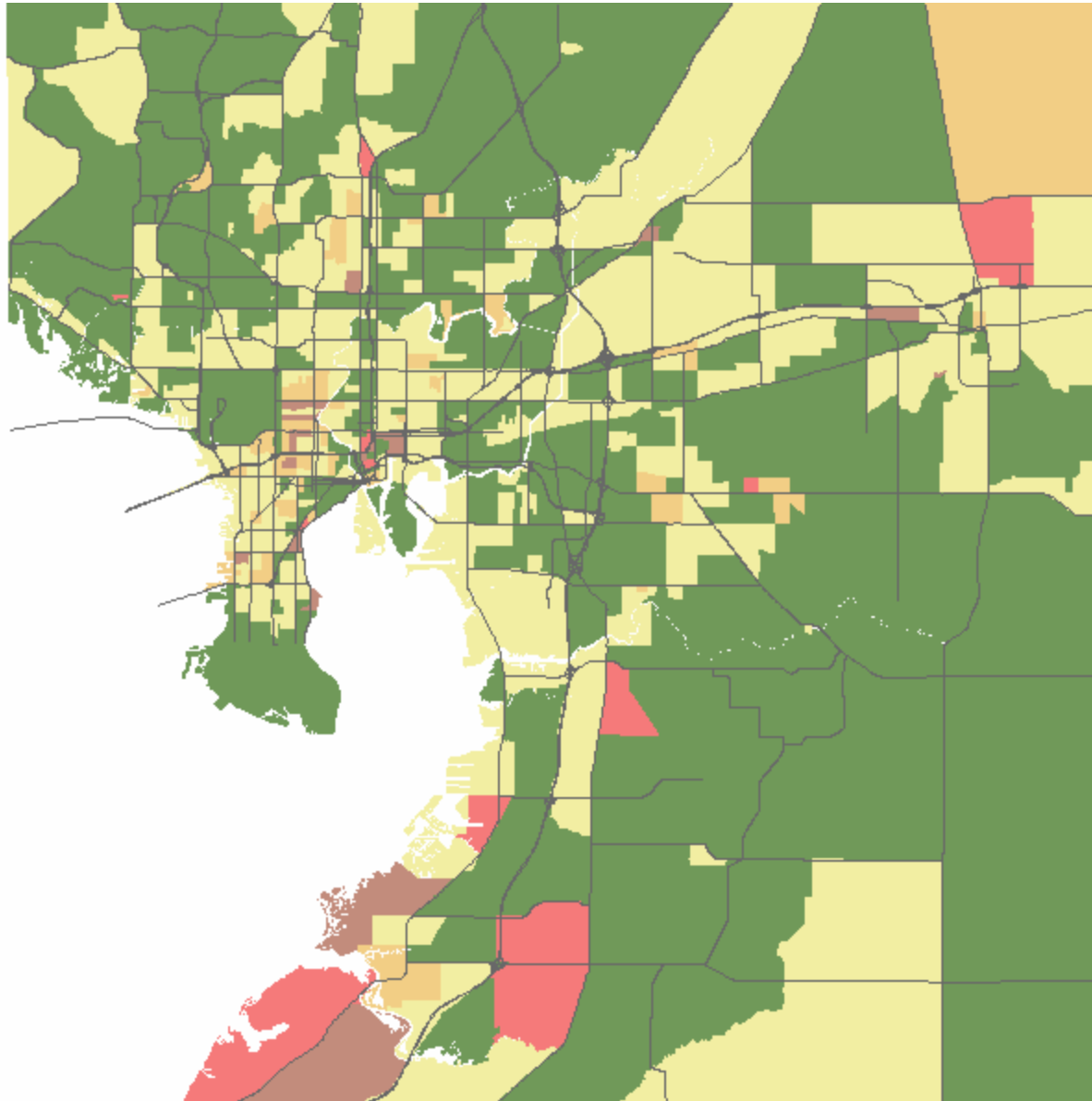
Median Income



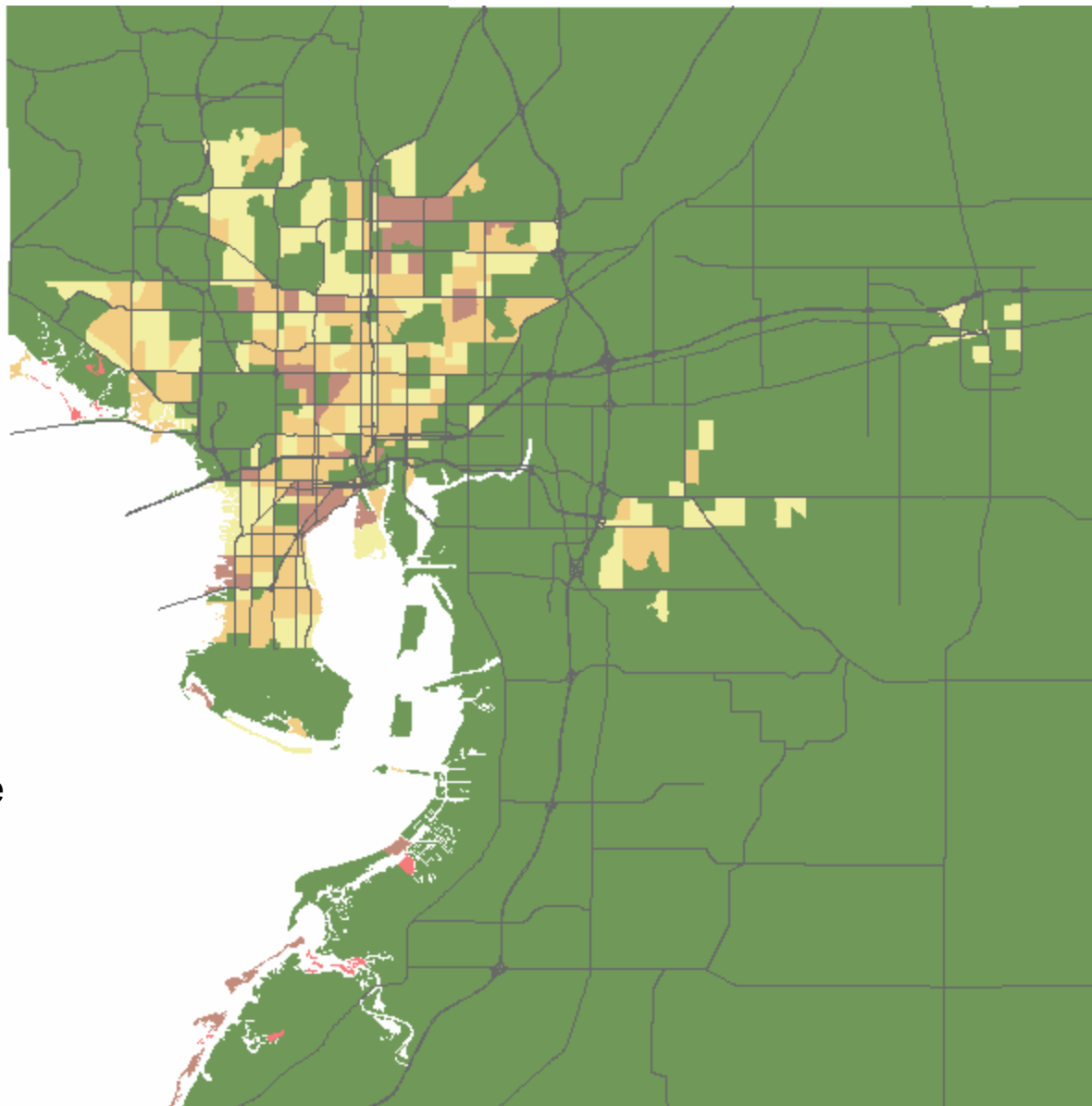
% Households With Children Under 18



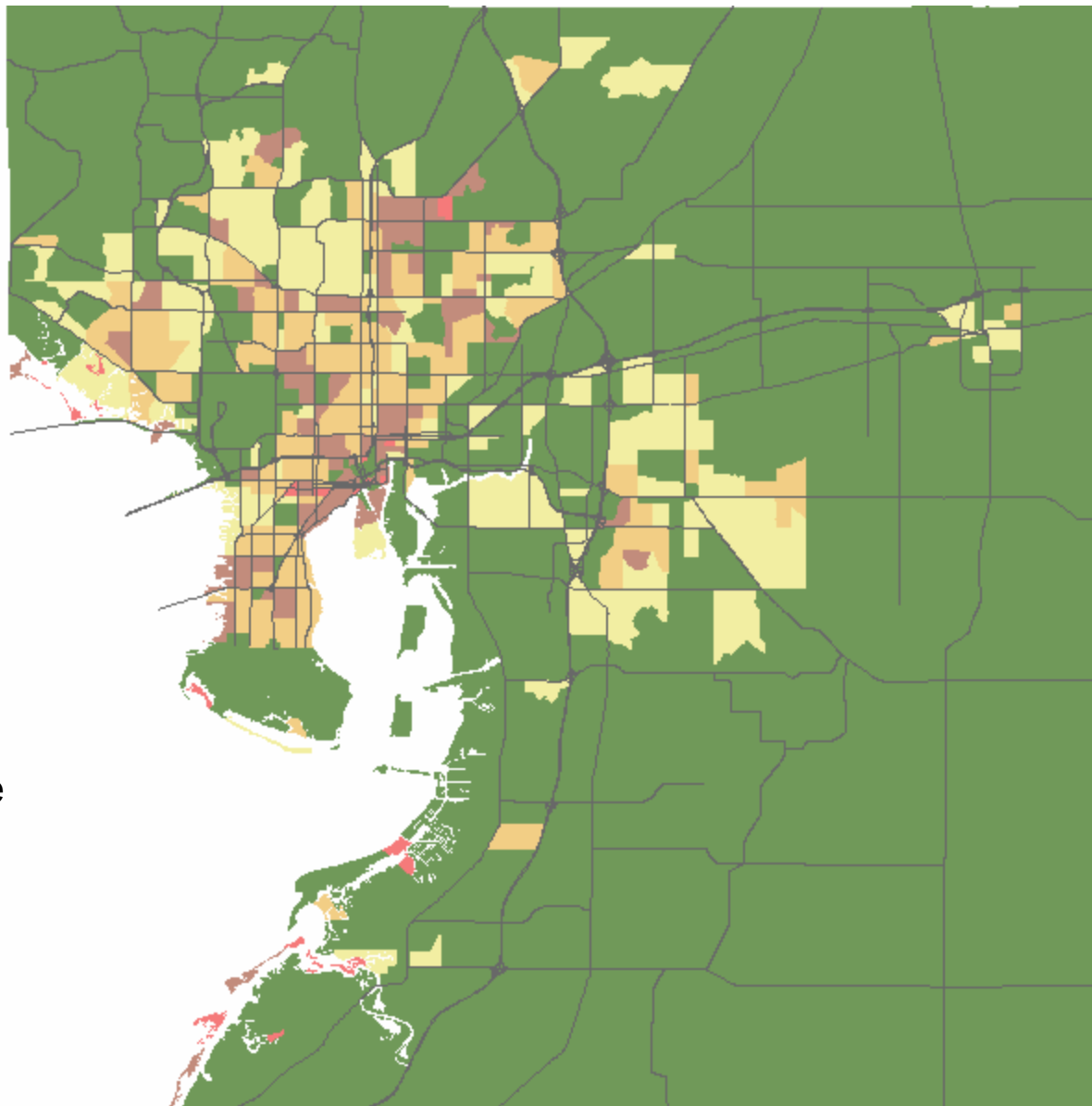
Percent of Residents Over 65



2000 Household Densities

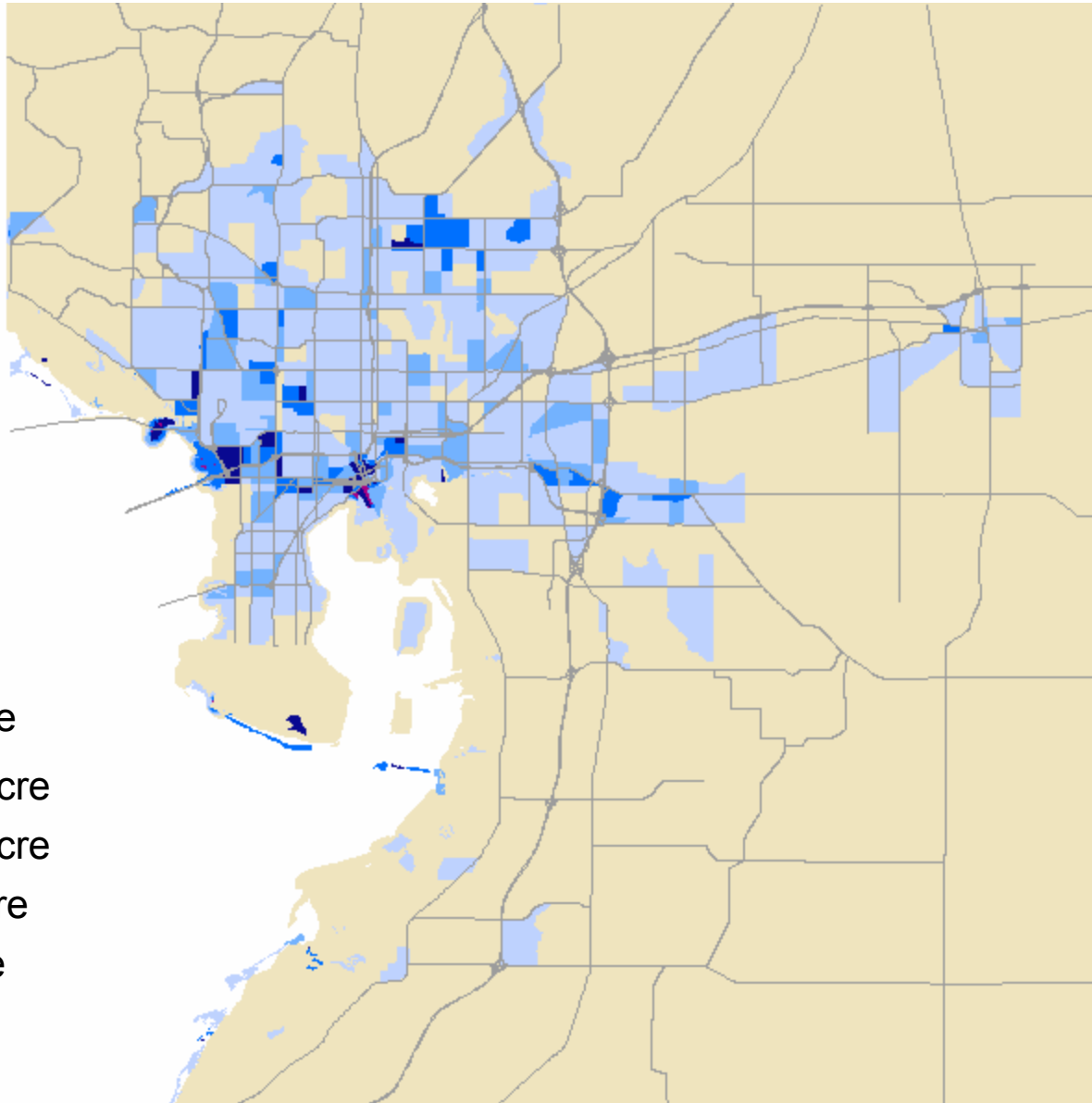


2025 Household Densities



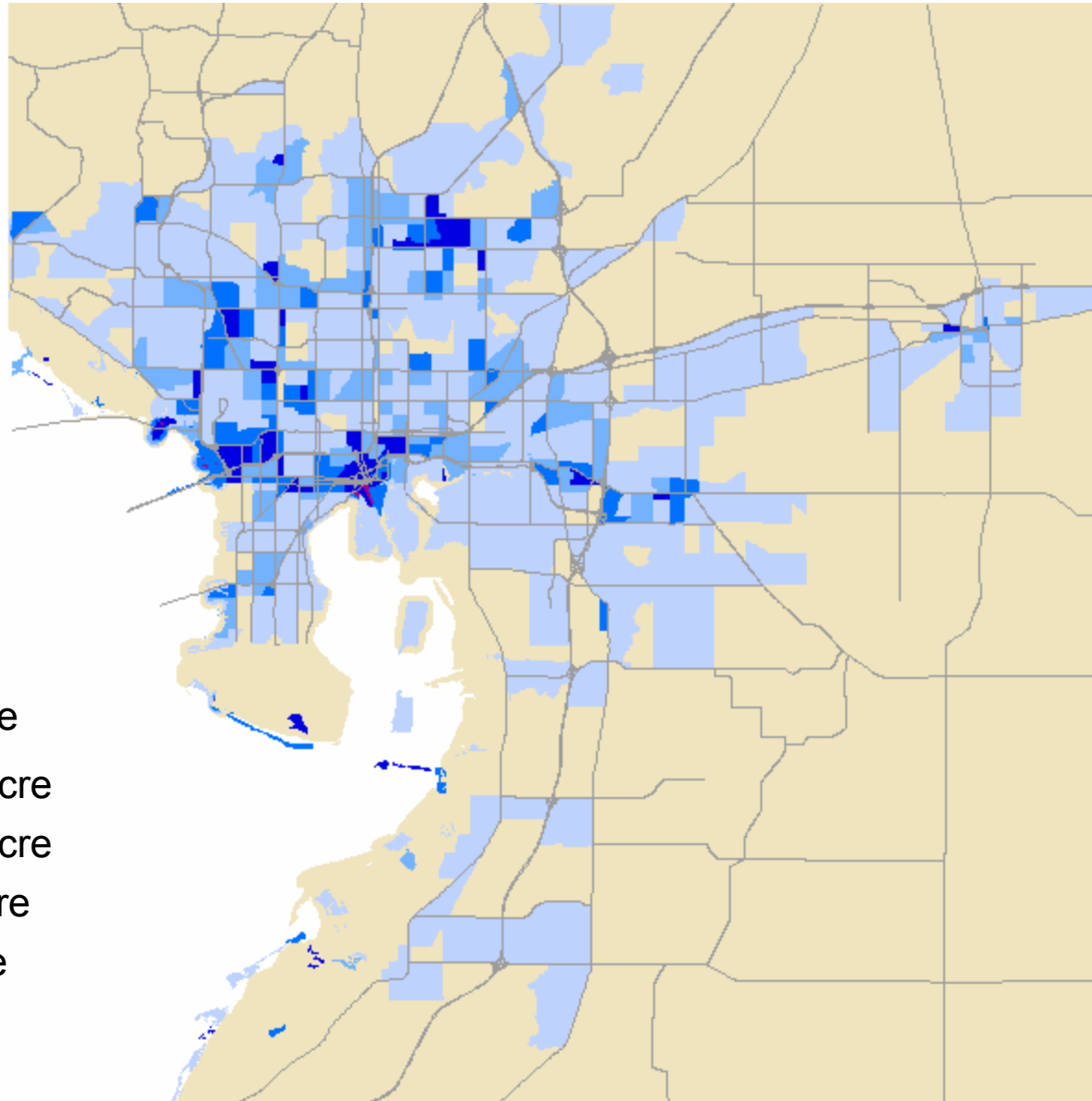
- 12+ HH / Acre
- 8-12 HH / Acre
- 5-8 HH / Acre
- 3-5 HH / Acre
- < 3 HH / Acre

2000 Employment Densities



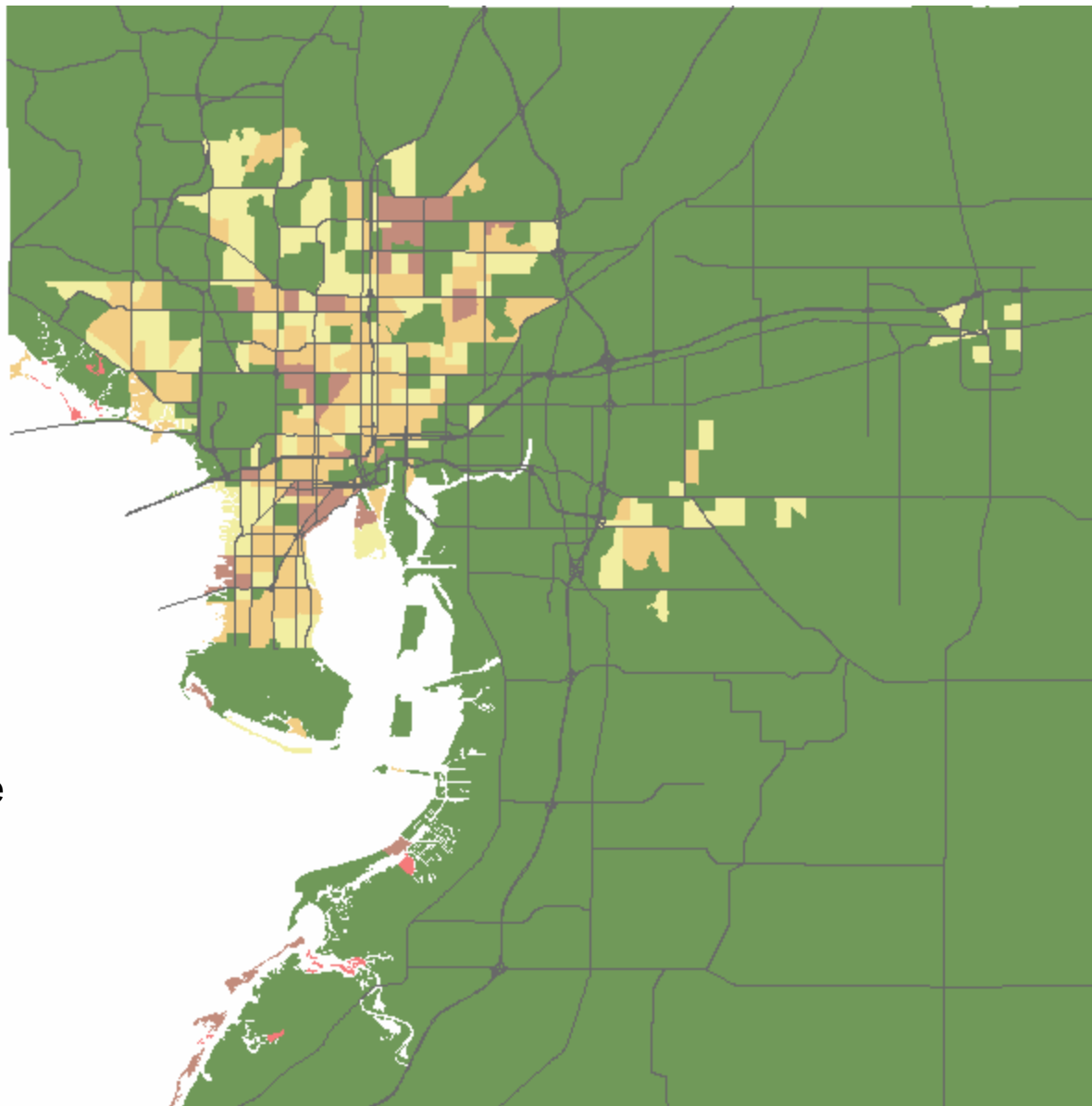
- 72+ Emp / Acre
- 36-72 Emp / Acre
- 12-36 Emp / Acre
- 6-12 Emp / Acre
- < 6 Emp / Acre

2025 Employment Densities



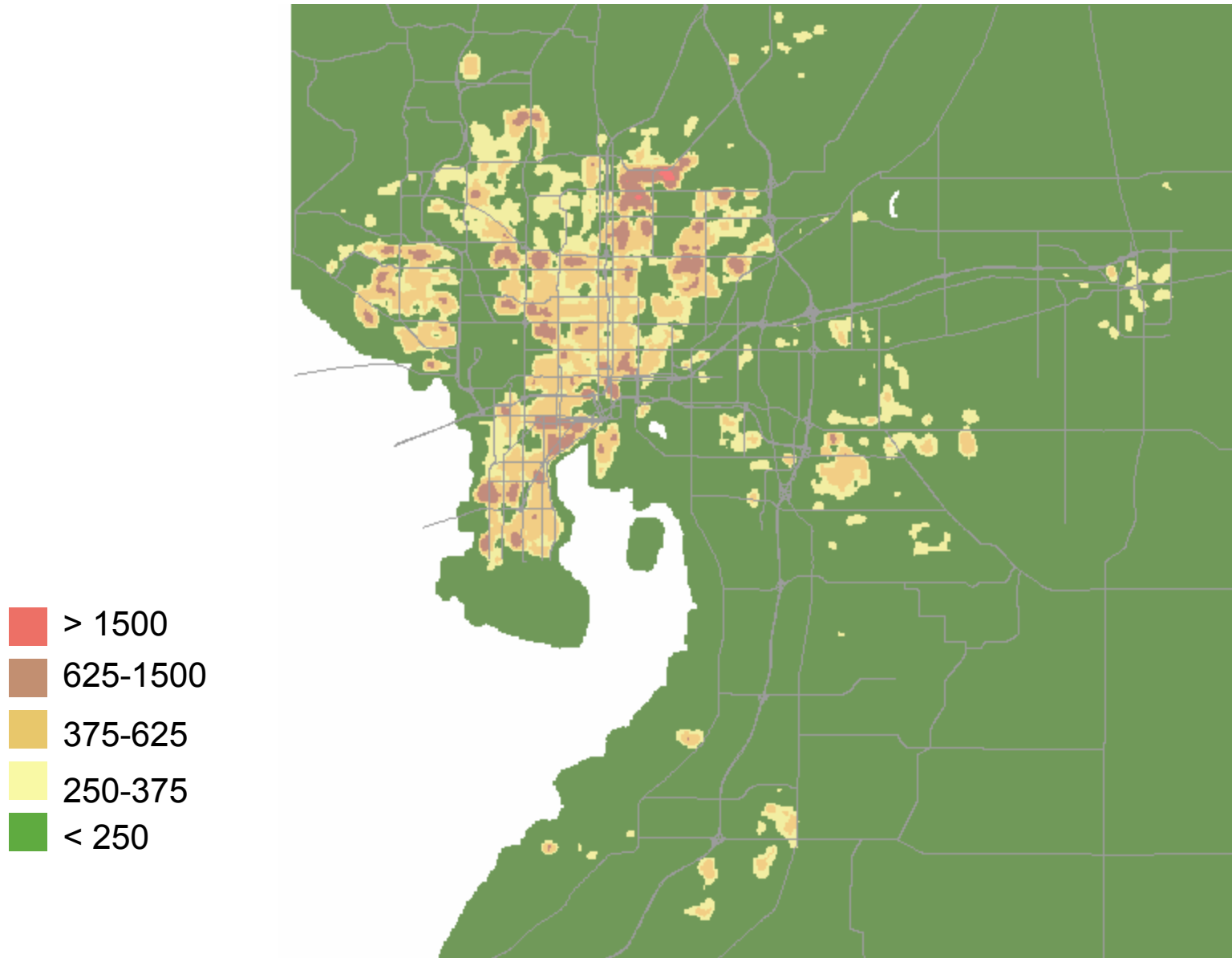
- 72+ Emp / Acre
- 36-72 Emp / Acre
- 12-36 Emp / Acre
- 6-12 Emp / Acre
- < 6 Emp / Acre

2000 Household Densities

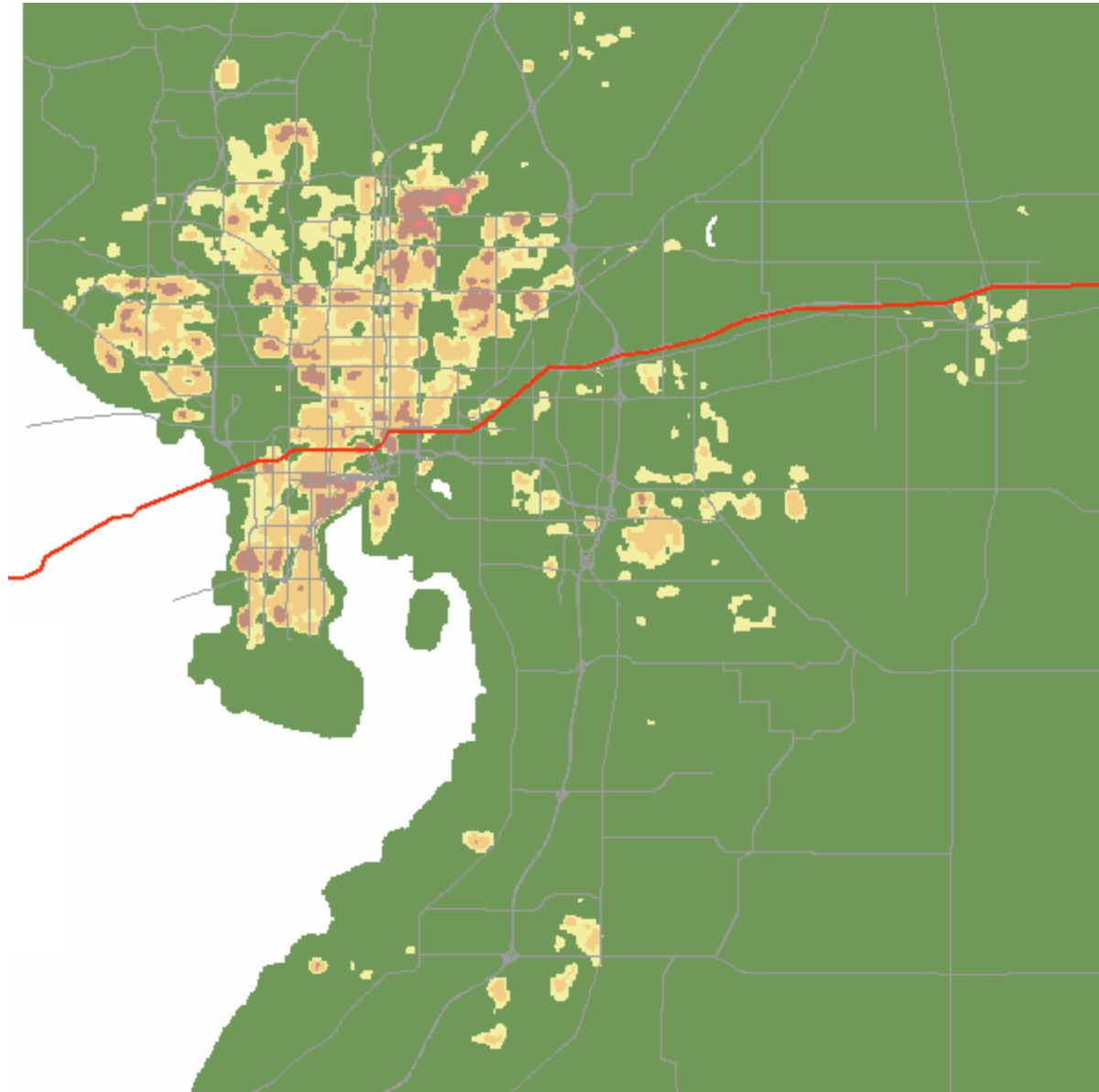


- 12+ HH / Acre
- 8-12 HH / Acre
- 5-8 HH / Acre
- 3-5 HH / Acre
- < 3 HH / Acre

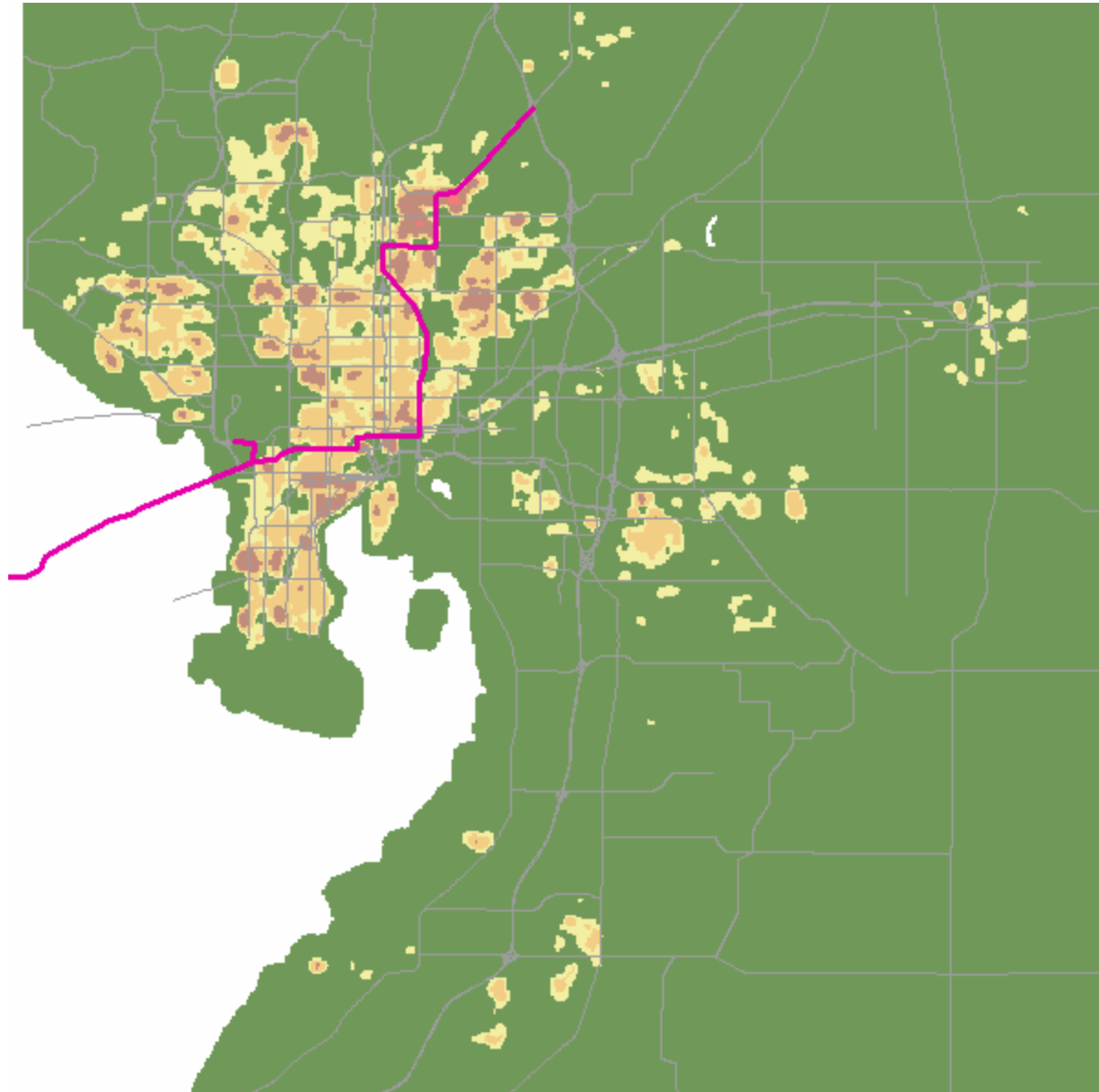
2000 Households Within ¼ Mile



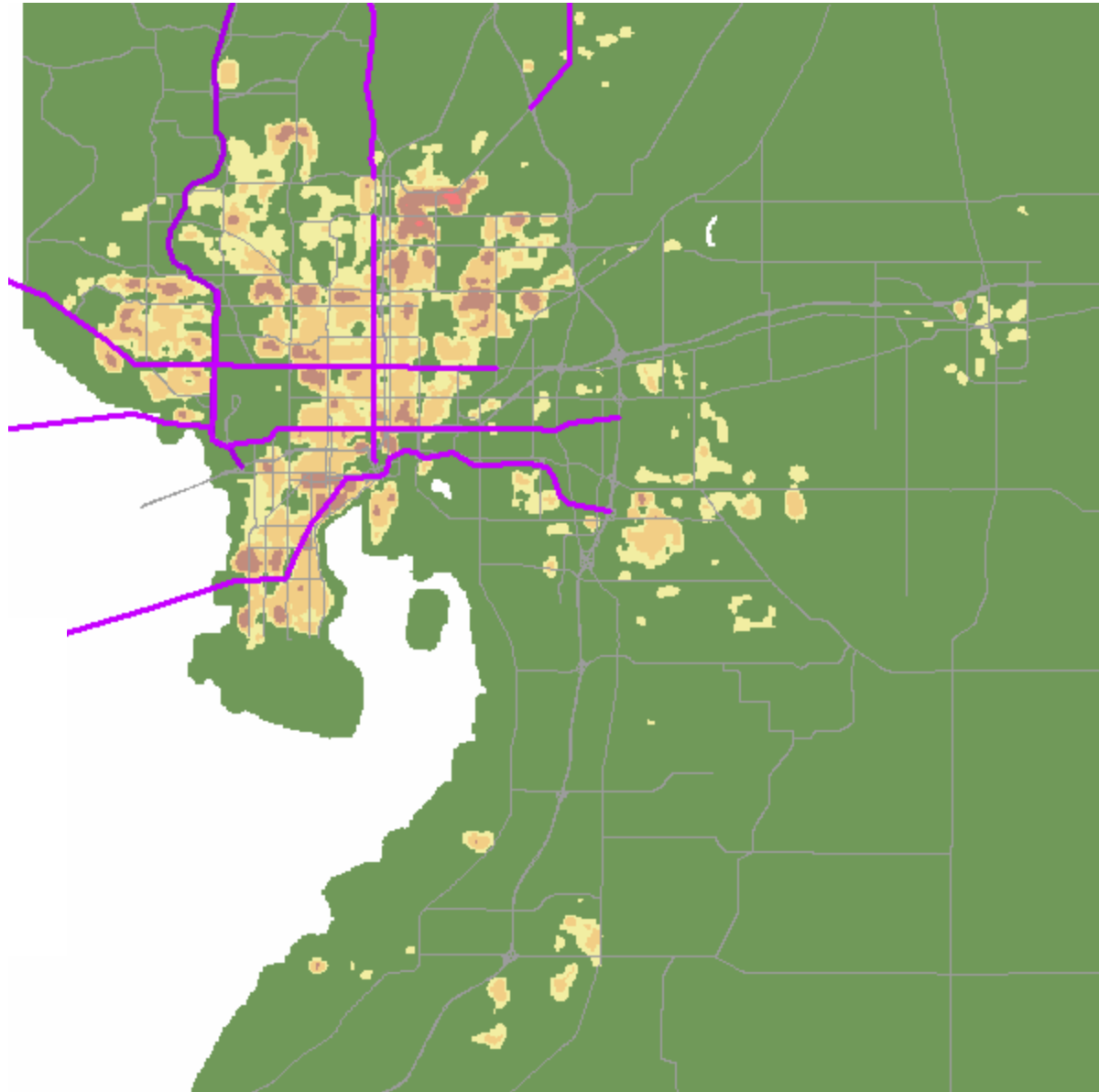
High Speed Rail



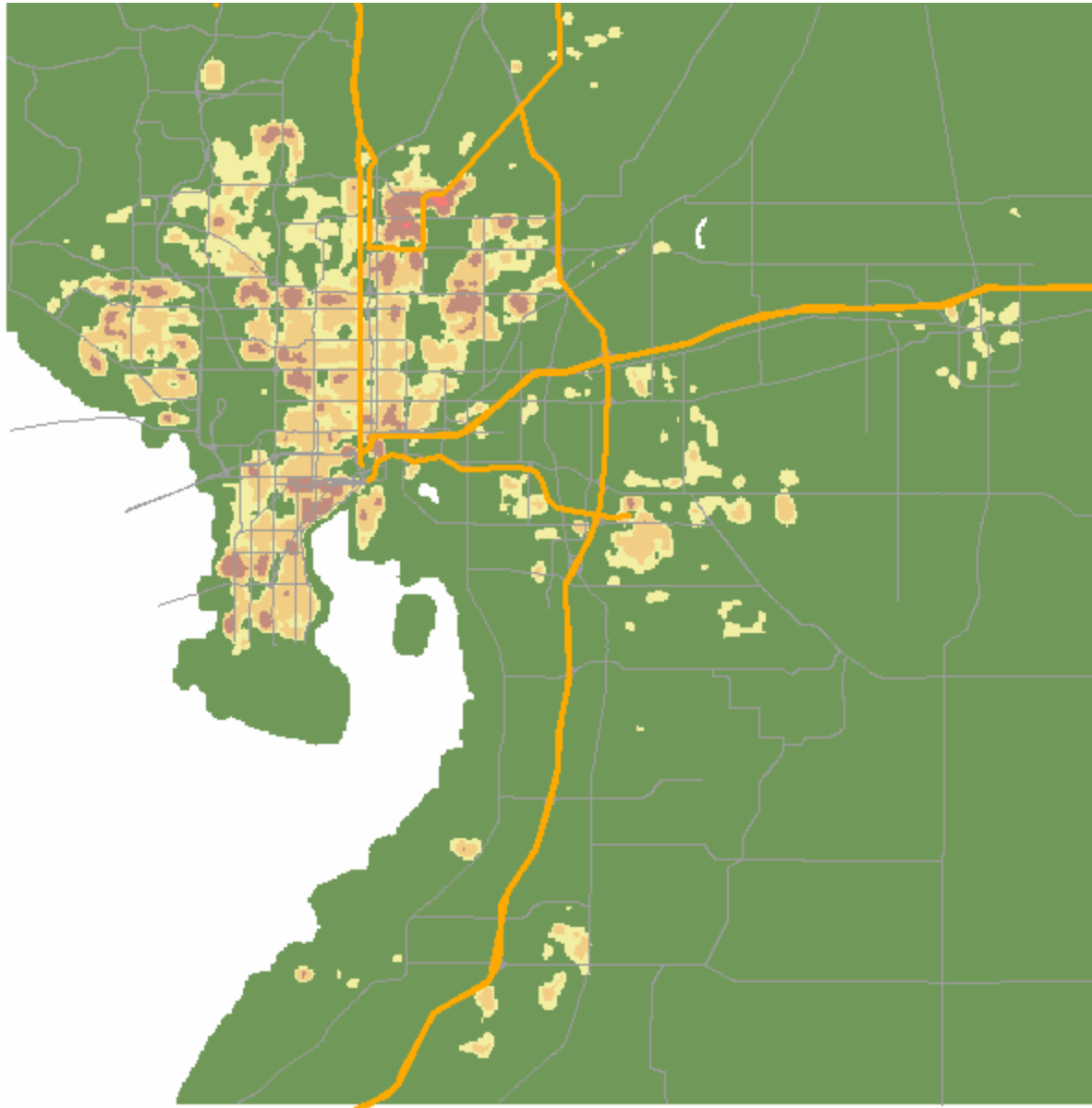
Fixed Guideway



Bus Rapid Transit

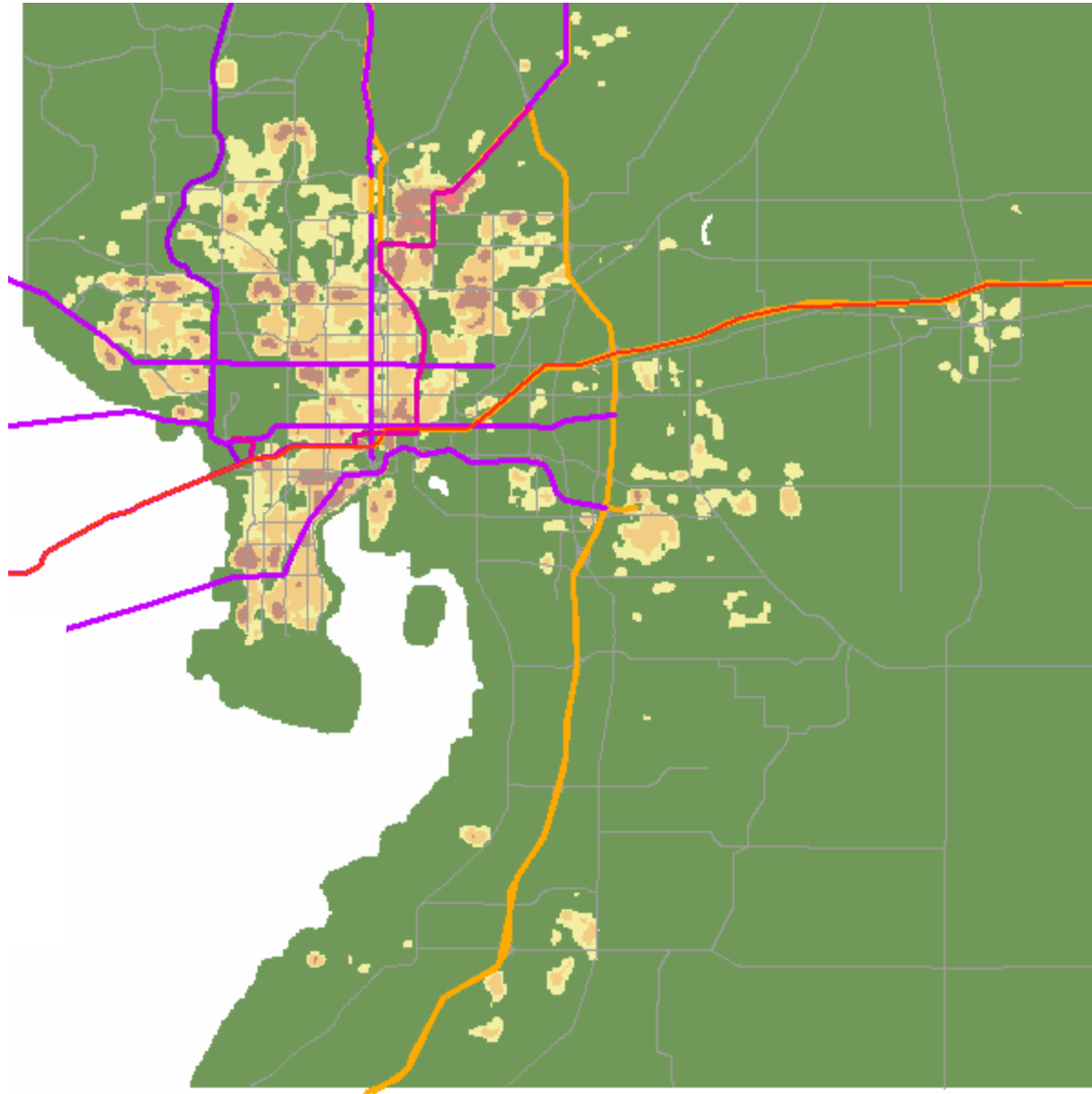


Express Bus

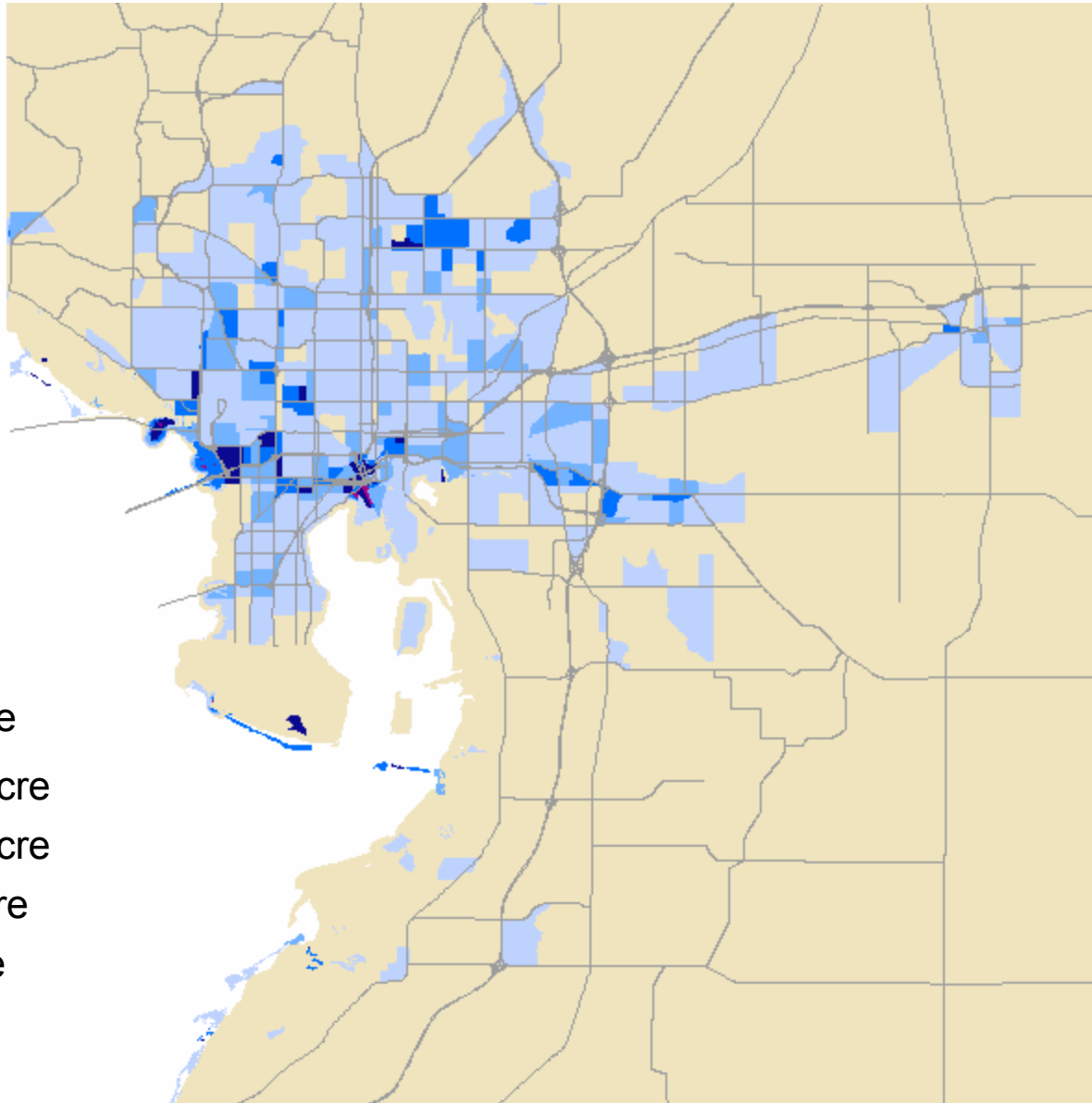


- > 1500
- 625-1500
- 375-625
- 250-375
- < 250

Composite Transit Needs

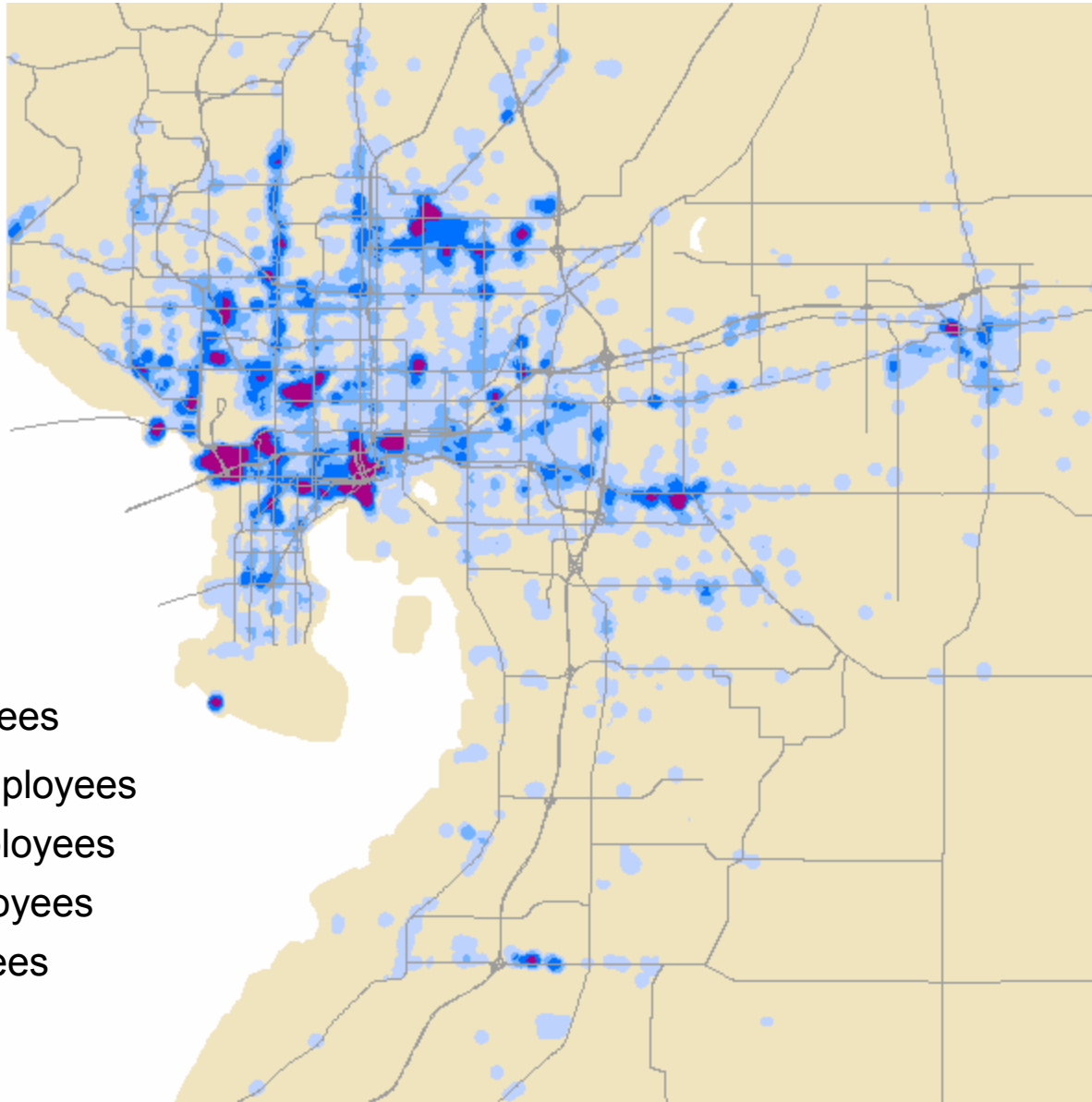


2000 Employment Densities



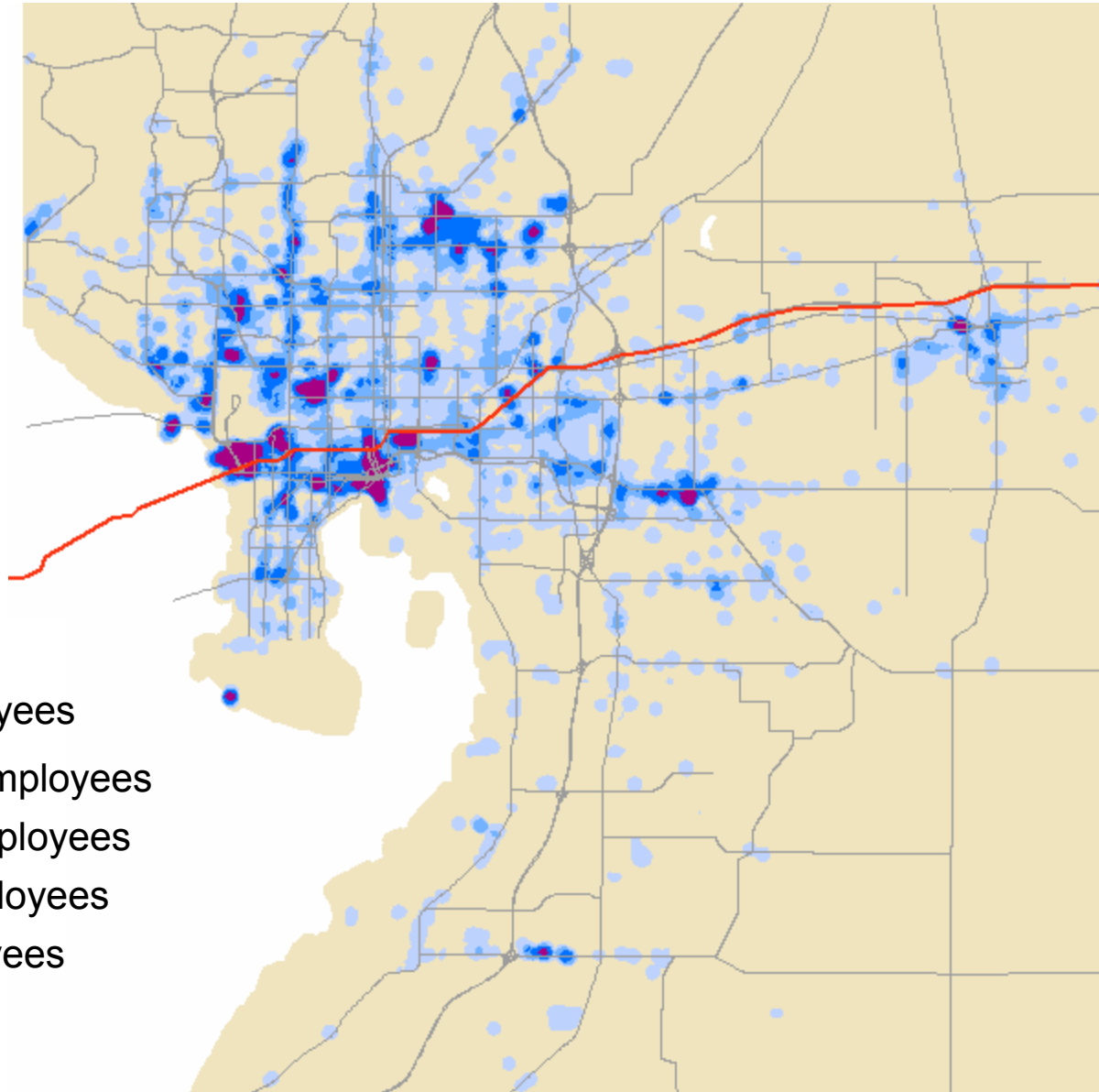
- 72+ Emp / Acre
- 36-72 Emp / Acre
- 12-36 Emp / Acre
- 6-12 Emp / Acre
- < 6 Emp / Acre

2000 Employment Within ¼ Mile



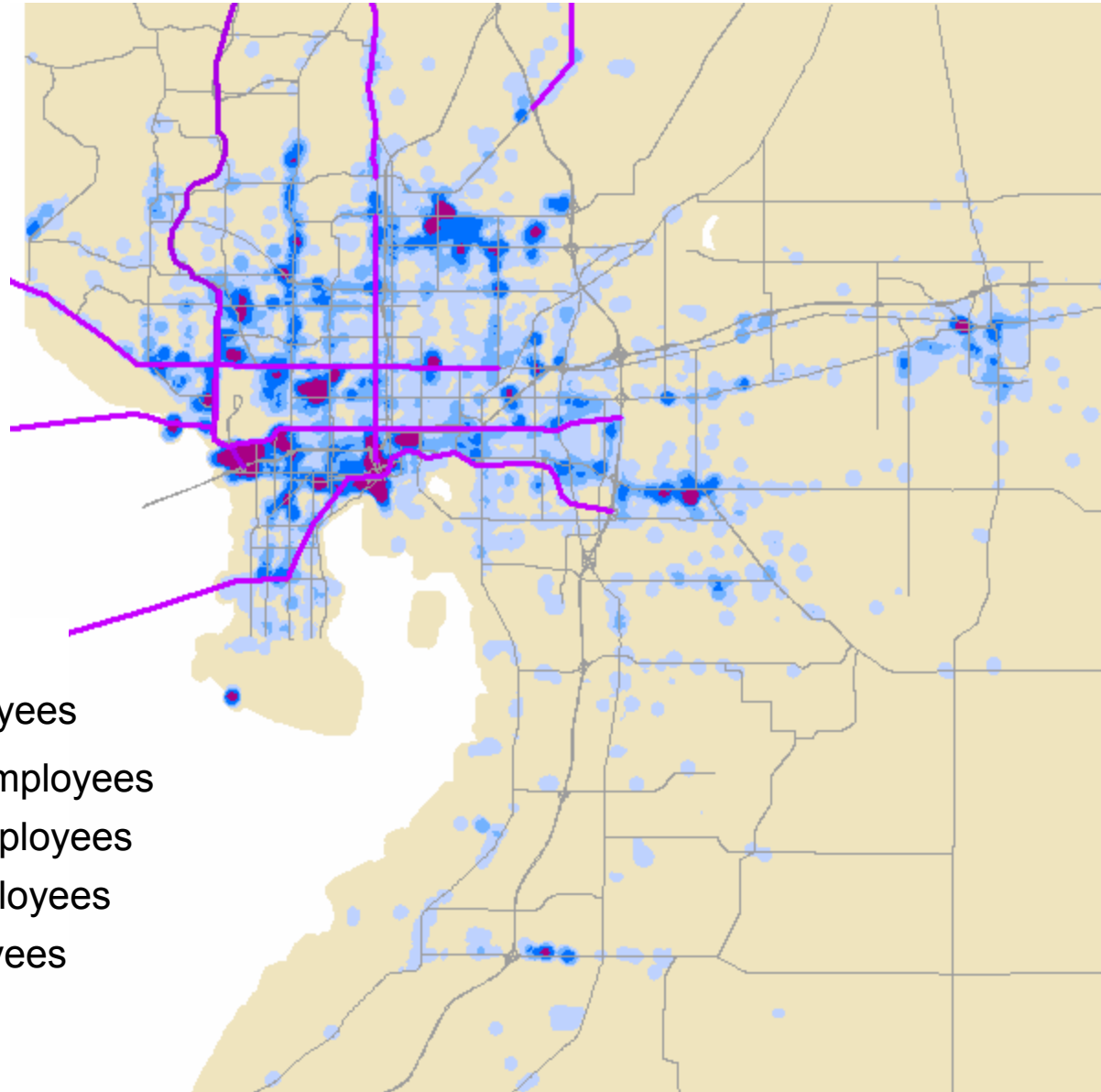
- 3000+ Employees
- 1500-3000 Employees
- 750-1500 Employees
- 125-750 Employees
- < 125 Employees

High Speed Rail

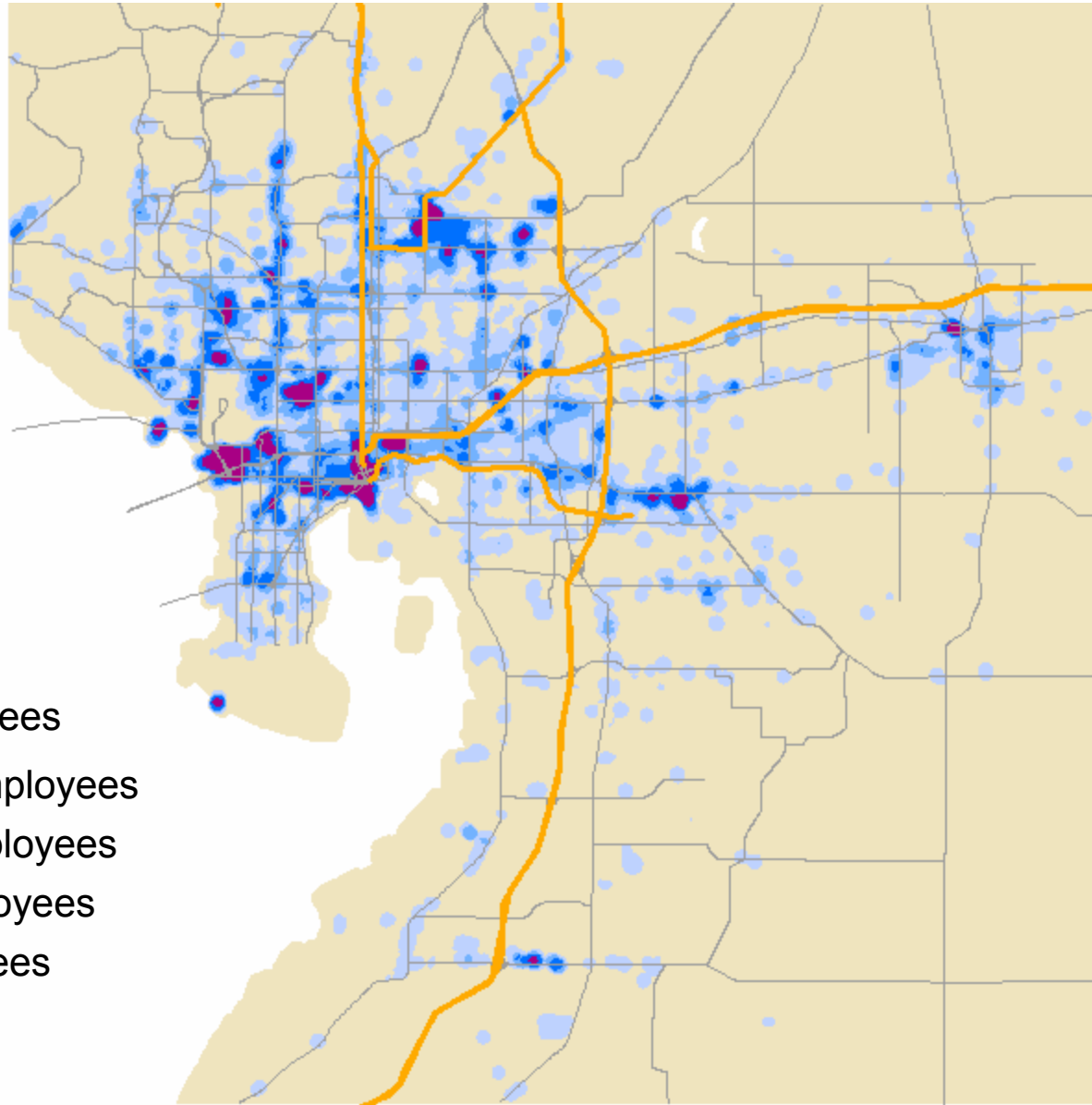


- 3000+ Employees
- 1500-3000 Employees
- 750-1500 Employees
- 125-750 Employees
- < 125 Employees

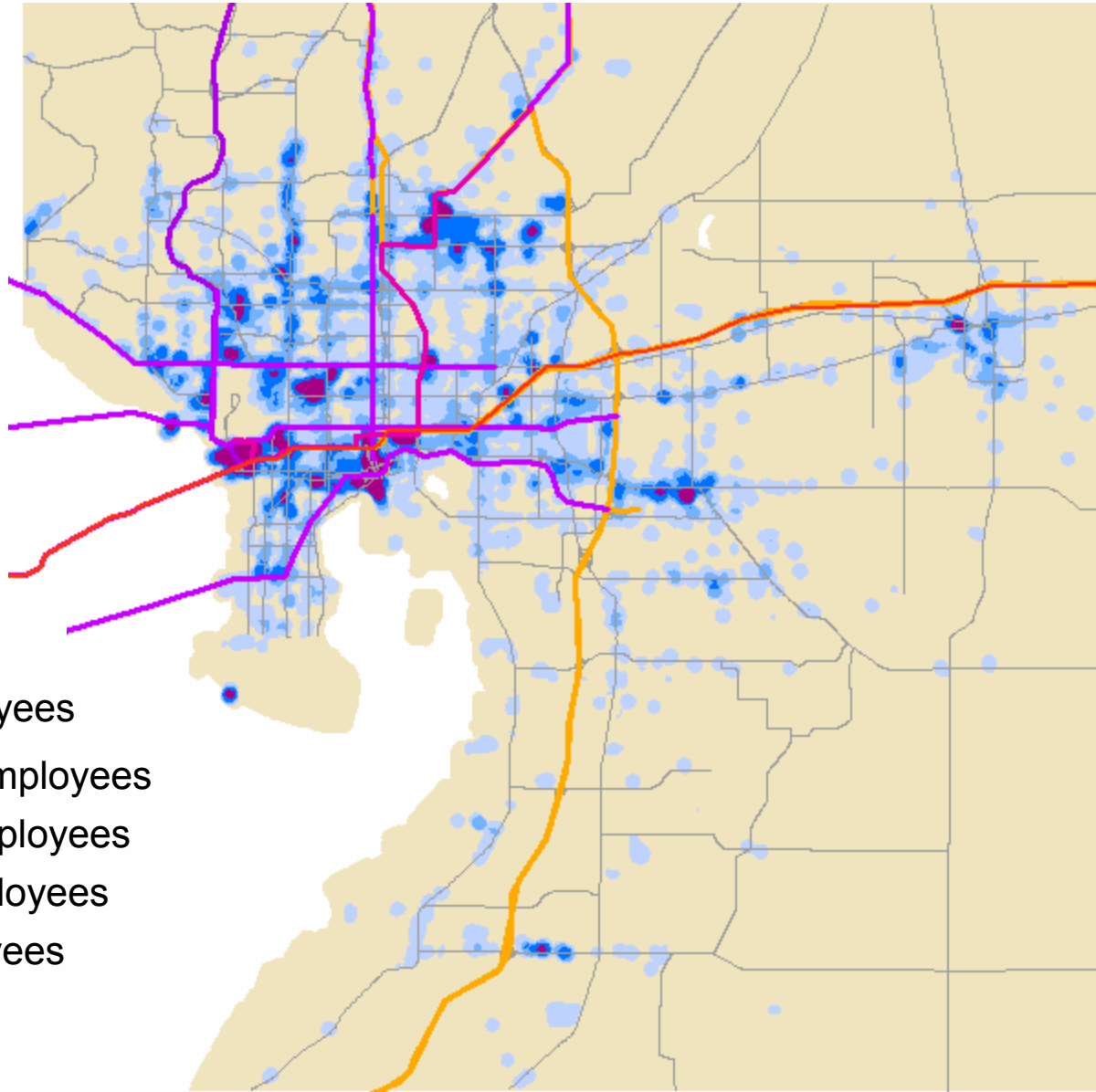
Bus Rapid Transit Corridors



Express Bus Corridors



Composite Transit Needs



- 3000+ Employees
- 1500-3000 Employees
- 750-1500 Employees
- 125-750 Employees
- < 125 Employees